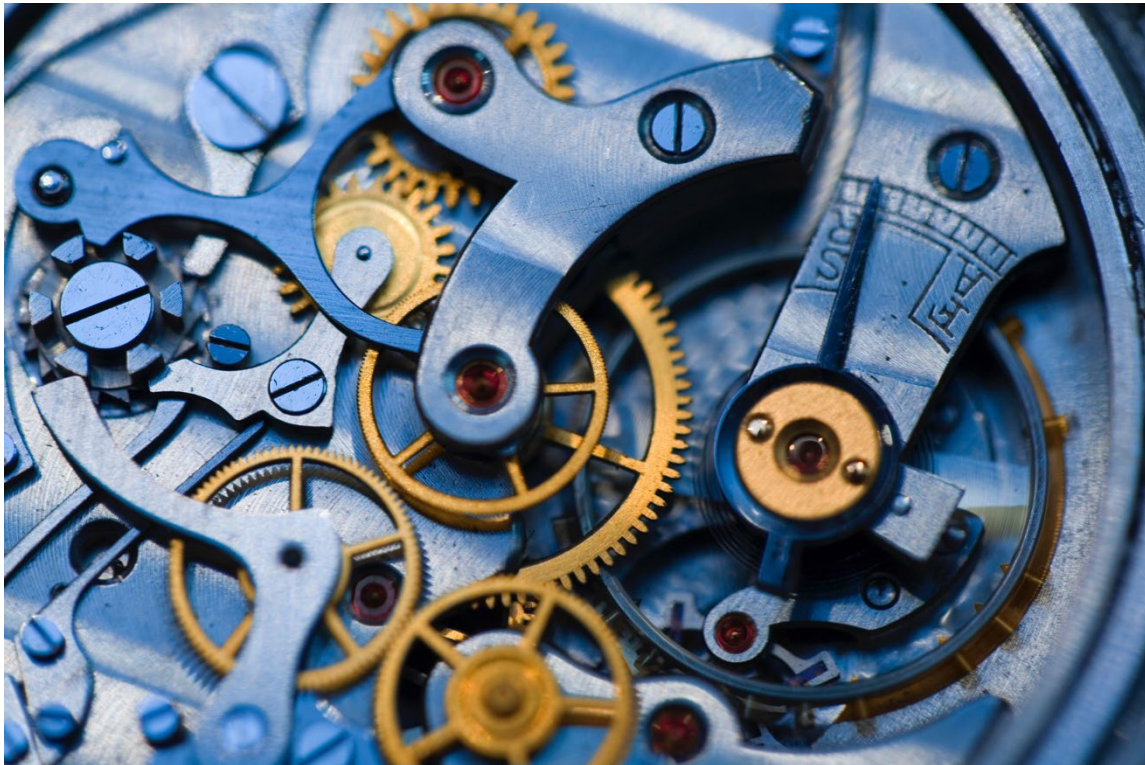


RESOURCE GUIDE

Artists Helping the Homeless

COMMUNITY RESOURCES



Updated Spring 2023

“Give us the tools, and we will finish the job.” - Winston Churchill

MENTAL HEALTH/CRISIS/BEHAVIOR/SUBSTANCE ABUSE

NON-CRISIS

- **Mental Help Line 913-281-1234**
- **MHAH Compassionate Ear Warmline. 913-281-2251** *a listening service that offers non-crisis support, information, ways to deal with problems, and help with loneliness*

CRISIS

- **988 Suicide and Crisis 988** *a free crisis hotline that anyone can call to talk to a trained mental health professional and get help finding local services.*
- **National Suicide Prevention Lifeline 1-800-273-8255** *to talk to someone when feeling emotional pain or suicidal*
- **Suicide Prevention Line 816-471-3939**
- **Johnson County Mental Health Center's 24/7 Crisis line 913-268-0156** *to talk to a professional in mental health*
- **FirstStepFor HELP.com 1-888-279-8188** *A free way for people in Missouri and the Kansas City area to talk to a professional clinician (in more than one language) (confidential)*
- **Wyandot Behavioral Health Network 913-788-4200** *a 24 hour crisis line in Wyandotte county*
- **Comprehensive Mental Health Services 816-254-3652** *A service that helps people find help for different kinds of crises and drug and alcohol abuse, and that can also help with family relationships (office hours are Monday-Friday 8:00 am-4:30 pm)*
- **Domestic Violence/Rape Victims 816-995-1000**
- **Rape Hotline 816-531-0233 or 816-931-4527**
- **Child Abuse Hotline. 1-800-392-3738**
- **Adult Abuse Hotline. 1-800-392-0210**

BEHAVIOR/SUBSTANCE ABUSE

- **Heartland Center for Behavioral Change 866-242-6670** *a service in the Kansas City area that helps people change their habits and deal with drug and alcohol problems for little or no money.*
- **National Council on Alcoholism and Drug Dependence 816-361-5900**
- **Research Mental Health Services 816-444-8161 or 816-966-0900**
- **Samuel U. Rodgers Health Center 816-474-4920** *a place where adults, children, and families can go to get help with things like housing, health insurance, food assistance, and more. They can also get rides to these places of help in Kansas City, MO.*
- **Swope Health. 816-922-1070 or 816-932-5800** *offers services for mental health and drug abuse to anyone in the KC, MO area, no matter what their background is.*
- **TMC Network Behavioral Health 816-467-1400**
- **University Health Behavioral Health Crossroads (Truman Medical Center) 816-404-5709** *provides walk-in care from 8 a.m. to 12 p.m., Monday through Friday in KC MO. A health professional will help with mental health issues, drug abuse, and getting housing and health care.*
- **Valeo Behavioral Health Care 785-233-1730 330 SW Oakley Ave Topeka, KS 66606** *mental health care regardless of ability to pay*
- **Western Missouri Mental Health Center 816-512-7000**

DRUG AND ALCOHOL FACILITIES

- **Imani House 816-929-2600**
- **KC Community Center 816-421-6670**
- **Salvation Army 816-483-2281 or 816-421-5434**
- **Gateway 816-254-3652**

- **Renaissance West 816-333-2990**
- **Rediscover 816-966-0900**
- **Northland Community Center 816-630-8986**

12-STEP PROGRAMS

- **Alcoholics Anonymous 816-471-7229**
- **Narcotics Anonymous 816-531-2250**
- **Cocaine Anonymous 816-248-8873**
- **Al-Anon / Alateen 816-373-8566**

SHELTER

- **Shelter Hotline (emergency housing) 816-474-4599**
- **City Union Mission 816-474-9380. Doors open any time **call shelter hotline to reserve (816-474-4599)**
 - **Men's Sheleter 1108 E. 10th St. KC MO 64106**
 - **Family Center 1310 Wabash Ave KC MO 64127**
 - **Christian Life Center 1111 E. 10th St. KC MO 64106**
- **Family Promise of the Northland – Transitional Housing for Families. 816-888-7070. 4406 NE 45th Terr. KC MO 64117**
overnight accommodations, meals, case management, laundry facilities, and the use of our day center as a home base to find employment and/or housing.
- **Crossroads Homeless Shelter 816-461-1093 14704 Truman Road, Independence, MO 64050** *Call to arrange a bed starting at 7:00 a.m. Space for six (6) males, six (6) females, as well as families.*
- **Forest Avenue Baptist Church 816-753-4753. 4300 Forest Avenue, KC MO** *For women and children under 14 only **call shelter hotline to reserve (816-474-4599).*
- **Hillcrest Hope-Avondale. 816-452-8033. 2901 NE Jaudon St KC MO 64117** *In exchange for free rent and utilities, residents have to sign a written agreement that they will work full time, follow program rules,*

and go to classes taught by volunteers on life skills, employment, living in a community, and budgeting.

- **Restart Temporary Shelter 816-472-5664 918 E. 9th St. KC MO 64106**
- **RoseVilla-Leavenworth 913-250-5790. 523 Limit St. Leavenworth, KS 66048** *emergency housing for veterans*
- **Salvation Army Crossroads Family Emergency Shelter 816-252-3200. 14700 E. Truman Road Independence, MO 64050**
- **Shelter KC**
 - **816-421-7643** men's center. **1520 Cherry Street KC MO 64108**
 - **816-348-3287** women's center. **2611 E 11th Street KC MO 64127**
- **Section 8 Help.**
 - **1301 Vine** *(Thursdays 8:30 am- 11:30 am)*
 - **Kansas City Housing Authority 816-968-4100** 301 E. Armour Blvd.
- **HUD Housing. 1-800-955-2232** *rental help and counseling to find housing*
- **Affordablehousingonline.com** *income based housing*
- **KDADS Behavioral Health Services- Supported Housing Funds 785-296-4986** *provides low-income, homeless, or people at risk of being homeless with severe mental illness with affordable housing and services*
- **Kim Wilson Housing 913-233-3356 (*crisis line: 913-788-4200)** **726 Armstrong Ave. Kansas City, KS 66101** *permanent supportive housing (PSH) and Rapid Rehousing*

SHELTERS FOR WOMEN

- **Forest Avenue Shelter KC MO 816-753-4753**
- **Johnson County Interfaith Hospitality Network 913-345-2121**
- **Hope House 816-461-4673**

- **Joyce Williams 913-321-0951**
- **New House 816-471-5800**
- **Rose Brooks 816-861-6100**
- **Safe Haven 816-452-8535**
- **Safe Home. 913-262-2868**

CHILDREN

- **Kansas Department for Children and Families 785-296-3271** *help with childcare, child support, getting an education or training for a job, getting food or cash, and helping children who are in need.*
- **Missouri Department of Social Services (children's services) 816-889-2037** *help with childcare, child support, getting an education or training for a job, getting food or cash, and helping children who are in need.*
- **Homeroom Health-The Hangout 816-601-2375 1106 E 30th St, Suite B KC MO 64111** *drop-in center for ages 0-24 for snacks, drinks, technology and public internet, and help with using the computers*
- **Parents as Teachers 816-418-5006 5915 Park KC MO 64130** *Information and help for parents and families with children*
- **Runaway Hotline. 1-800-231-6946**
- **Teens/Runaways. 816-342-5121**
- **Troubled Youth 816-471-8700**

FINANCIAL (rent, utilities, prescriptions, TANF)

- **Department of Social Services:**
 - **816-889-2000** Jackson County: 615 E. 13th
 - **816-781-1784** Clay County: 7000 Liberty Drive
 - **816-858-3740** Platte County: 233 Marshall
 - **913-715-6653** Johnson County: 12425 W 87th Pkwy, #300
 - **913-573-5502** Wyandotte County: 701 7th St
- **Bishop Sullivan Center 816-231-0984** *help with food, rent, utility, prescription cost*

- **Cathedral of the Immaculate Conception 816-842-0416 416 W 12th St. KC MO 64105** *utilities and prescription assistance * call after 12pm*
- **Catholic Charities 816-221-4377**
- **City Union Mission 816-474-9380** *help with food, clothing, utilities, and prescriptions*
- **Metro Lutheran Ministry** *connects people in need with food, housing, health care, education, job services, and other resources (three locations):*
 - **3031 Holmes St. KC MO 64109 816-931-0027**
 - **722 Reynolds Ave. KC KS 66101 913-432-8333**
 - **1100 Northeast Vivion Rd. KC MO 816-454-5295**
- **Salvation Army 816-968-0402 or 816-756-1455** *help with food, social services, clothing, rent, utility, and prescription cost*
- **SOAR or SSI/SSDI Outreach, Access, and Recovery**
<https://soarworks.prainc.com> *a program that makes it easier for adults who are homeless or at risk of being homeless and have mental illness, a medical disability, or a drug use disorder to get supplemental security income and social security disability insurance.*
 (Melissa Bogart-Starkey is the Kansas state Lead **785-296-0620** or Jonathan Pendergrass for KS **785-217-8088**)
 (Amanda Stadler is the Missouri State Lead **573-522-2264** or Jared Reck for KC MO **785-691-6586**)
- **Community Services League 816-254-4100** *coaches can help find programs to help with mortgage payments, medical costs, and utility assistance*
- **United Way 816-474-5112**
- **Cathedral of Immaculate Conception 816-842-0416**
- **El Centro, Inc. Administration Center and Home Ownership Center 913-677-0100. 650 Minnesota Ave. KC KS 66101**
Instruction and one-on-one counseling on credit and money issues help people learn how to manage their money for the rest of their lives.

FOOD

- **Community Services League. 816-912-4502. 404 N Noland Rd Independence, MO. 64050** *food pantry*
- **Harvesters Food Bank 877-353-6639.** *Call for locations near you. Multiple locations in Kansas and Missouri*
- **Don Bosco Center 816-691-2900 580 Campbell Street KC MO 64106** *drive through only pick up 2nd Friday of each month 2:00pm - 3:30pm*
- **St. Charles Food Pantry 816-436-0880** *food for those in need living north of the River in MO. Hours are 12:30pm – 2:30 pm M,W,F)*
- **St James Social Services 816-561-8515. 3936 Troost Ave. KC MO 64110** *food pantry*
- **Mimi's Pantry 2255 NW Vivion Road KC MO 64150** *open Monday 4pm-6pm, Wednesday 10am-12pm, and Thursday 1pm-3pm*
- **HOPE.wrx. 900 Northeast Vivion Road KC MO 64118** *open Monday 5pm-7pm, Tuesday 3pm-5pm, Wednesday 5pm-7pm, Thursday 1pm-3pm, and Saturday 9am-11am*
- **Avondale United Methodist Church 3135 NE Winn Road, KC MO 64117** *open Wednesday 9am-11am*
- **Saint Charles Borromeo Parish. 816-436-0880 900 NE Shady Lane Dr. KC MO 64118.** *Open Monday, Wednesday, and Friday 12:30-2:30pm*
- **New Kingdom of Faith and Restoration Church 816-801-0145** *open Monday-Friday 8am-5pm*
- **Met's Food Pantry (Metropolitan Missionary Baptist Church) 816-923-3689 2310 Linwood Blvd. KC MO 64109** *open Tuesdays 9am-11:30 am*
- **Guardian Angels Parish 1310 Westport Rd KC MO. 64111** *open Sunday 10am-12pm and Wednesday 3pm-4pm*
- **Shawnee Community Services 913-268-7746. 11110 W 67th St. Shawnee, KS 66203** *open Monday-Saturday 10am- 3pm*

- **Urban Community Connection 3800 Linwood Blvd. KC MO 64128**
open Friday 3pm-5pm

HOT MEALS

- **Kansas City Community Kitchen** *nutritious meals M-F from 11am -2pm* **Downtown Community Services Center at 8th and Paseo**
- **Nourish KC** *hot, nutritious meals every Wednesday at noon* **12251 Antioch Road, Overland Park, KS 66213**
- **Reconciliation Services 816-931-4751 3101 Troost Ave. KC MO 64109** *meals served Friday from 4:30pm-7pm. No charge. All welcome*
- **Cathedral of the Immaculate Conception 816-842-0416. 416 W 12th St KC MO 64105** *Breakfast Tuesday – Friday 7:15am – 8:30am Lunch Saturdays 12:00 – 12:45pm Sundays 1:00 – 2:00pm*
- **HOPE Works. 816-729-2095 900 NE Vivion Rd. KC MO 64118.** *Meals served: Mon: 5:00pm -7:00pm Tues: 3:00pm - 5:00pm Wed: 5:00pm -7:00pm Thurs: 1:00pm -3:00 pm Sat: 9:00am -11:00am*

CLOTHING

- **Neighbor 2 Neighbor 816-931-1150 500 W 40th St KC MO 64111**
- **Whatever Community Center 816-231-0227 1201 Ewing KC MO 64126**
- **Saint James Social Services 816-561-8515. 3936 Troost Ave. KC MO 64110**
- **True Light Family Resource Center. 816-561-1700. 712 E. 31st St. KC MO 64109** *females only*
- **Saint James United Church 816-444-5588. 5540 Wayne Ave. KC MO 64110**

- **Birthright of Greater Kansas City 816-444-7090 6309 Walnut St. KC MO 64113** *women and children- maternity clothes, baby clothes, diapers*
- **Della Lamb Community Services 816-842-8040 500 Woodland Ave. KC MO 64106**
- **Grace United Church 816-231-5745 801 Benton Blvd. KC MO 64124**
- **Immanuel Baptist Church 816-254-9579 112 W 23rd St. Independence, MO 64055**
- **Shawnee Community Services 913-263-7746. 11110 W 67th St Shawnee, KS. 66203**

SHOWERS and LAUNDRY

- **Cross-Lines Community Outreach 913-281-3388. 736 Shawnee KC KS 66105** *free laundry facilities and public showers/baths. Drop off/pick up laundry services M-F 6am-9am*
- **Family Promises of the Northland 816-888-7070 4406 NE 45th Terr KC MO 64117** *free showers, cleaning supplies, laundry and clothing*
- **Finding Grace Ministries 314-403-0210. 3921 Jeffco Blvd Arnold, MO 63010** *public showers/baths, laundry *safe for children and families*
- **Homerom Health-The Hangout 816-601-2375 1106 E 30th St, Suite B KC MO 64111** *public showers for ages 0-24*
- **Hope Faith – Equipping Program 816-471-4673. 705 Virginia Ave. KC MO 64106** *Provides clothing, hair and nail care, places to do laundry, public showers and baths, a temporary mailing address, and winter clothes.*
- **Metropolitan Lutheran Ministries Homeless Drop-In Service Center 816-842-1199 600 E. 11th St. KC MO (6:30 am-noon, and 1:00 pm- 3:30 pm M-F)** *provides case management, a local phone, clothes, showers, lockers, laundry, mail services, housing, health (Swope Parkway Health Services), counseling, and job assistance.*

TRANSPORTATION

- **Beyond the Conviction 816-842-4975 1734 E. 63rd St. KC MO 64110**
- **Catholic Charities 816-221-4377. 4001 Blue Pkwy, Ste 250. KC MO 64130** *local transit passes*
- **Health Tran 660-259-2440** *KC MO to and from healthcare appointments*
- **Holy Family House 816-753-2677 912 E 31st St KC MO 64109** *bust ticket*
- **Swope Health Central 816-599-5575** *for transportation to medical/dental/behavioral health appointments*
- **University Health Truman Medical Center Hospital Hill 816-404-2273 2301 Holmes St KC MO 64108** *rides to hospital*

HEALTH CARE

- **Hope Faith Homeless Assistance Campus 816-471-4673. 705 Virginia Ave. KC MO 64106** *medical clinic open Saturdays 9am-12pm*
- **Kansas City Free Health Clinic 816-753-5144** *three locations:*
 - **Midtown** 3515 Broadway KC MO 64111
 - **Northeast** 4601 Independence Ave. KC MO 64124
 - **Research Medical Campus** 2340 E. Meyer Blvd, Building 1/ Suite 200, KCMO 64132
- **Samuel U. Rodgers Health Center. 816-474-4920. 825 Euclid Ave KC MO 64124** *medical, dental, and behavioral health care for all people, regardless of inability to pay*
- **Swope Health Central 816-923-5800 3801 Blue Parkway KC MO 64130** *medical, dental, behavioral health care and prescriptions*
- **Swope Health Hickman Mills 816-321-3201 Loma Vista Office Building 8800 Blue Ridge Blvd, 2nd floor, KC MO 64138**
- **Swope Health Maple Woods. 816-321-3230 3100 NE 83rd Street, Suite 1001, #140 Kansas City, MO 64119**

- **Swope Health Northland 816-599-5050 2906 NW Vivion Road
Riverside, MO 64150**
- **Swope Health West 913-321-2200 4835 State Avenue
Kansas City, KS 66102**
- **Swope Health Wyandotte 816-599-5111 21 N. 12th St., Suite 400.
KC KS 66102**
- **Swope Health KidsCARE Tenney Pediatrics 816-444-8400. 6501 E
87th St. KC MO 64138**

DENTAL

- **Swope Health Central Dental 816-923-5800 3801 Blue
Parkway KC MO 64130**
- **Bishop Sullivan Center – Kansas City’s Medicine Cabinet
*emergency dental care***
 - **Troost. 816-561-8515. 3936 Troost. KC MO 64110**
 - **Truman Road. 816-231-0984 6435 Truman Rd. KC MO
64126**
 -
- **Catholic Charities KCSJ-Emergency Assistance 816-221-4377.
*Dental care cost assistance***

VISION

- **Bishop Sullivan Center - Kansas City’s Medicine Cabinet *eye care,
glasses/contact lenses***
 - **Troost. 816-561-8515. 3936 Troost. KC MO 64110**
 - **Truman Road. 816-231-0984 6435 Truman Rd. KC MO
64126**
- **Catholic Charities KCSJ-Emergency Assistance 816-221-4377. *Eye
care cost assistance***

MEDICATION

- **Swope Health Central Pharmacy 816-923-5800 3801 Blue
Parkway KC MO 64130**

- **Bishop Sullivan Center - Kansas City's Medicine Cabinet**
prescription expense assistance
 - **Troost. 816-561-8515. 3936 Troost. KC MO 64110**
 - **Truman Road. 816-231-0984 6435 Truman Rd. KC MO 64126**
- **Catholic Charities KCSJ-Emergency Assistance 816-221-4377**
prescription expense assistance
- **2-1-1 United Way (211). 801 W 47th St. KC MO 64112** *prescription assistance*
- **Jackson County MO Prescription Drug Card 816-881-8833** *free prescription drug card to save money on medications*

IDENTIFICATION

- **Social Security National Toll-Free Number 1-800-772-1213**
other languages available. For Spanish, press 7. For any other language, stay on the line until someone answers. They will help contact interpreter.
- **Social Security Administration**
 - **816-842-6423 1100 Main Street**
 - **816-561-4144 3101 Broadway, Suite 200**
 - **1-866-698-2561 1440 Wakarusa, Lawrence, KS**
 - **1-800-772-1213 15375 W 95th Street, Lenexa KS**
- **Community Services League 816-254-4100 404 North Noland Road Independence, MO 64050** *can help you get a birth certificate, social security card, state identification card or other documents.*

LEGAL ASSISTANCE

- **Catholic Charities 816-221-4377. 4001 Blue Pkwy, Ste 250. KC MO 64130.** *Legal counseling*
- **City of Kansas City, MO- KC Right to Counsel Eviction Prevention 816-474-5112** *Kansas City Eviction Defense Program. Provides legal representation.*
- **Legal Aid of Western Missouri 816-474-6750**

- **Central Office** for representation of civil (non-criminal) matters
- **Human Rights Protection Unit** Free civil legal help for people with low incomes, help with immigrant benefits, and help with becoming a citizen.
- **Justice in the Halls** landlord/tenant assistance
- **Missouri Family Support Division-Jackson County Downtown 855-373-4636** Help with child care costs, help with or enforcement of child support, Food Stamps/SNAP Applications, Medicaid Appeals/Complaints, Medicaid Applications, and TANF Applications.
- **The Clinic at Sharma-Crawford Attorneys at Law 816-994-2300** Legal representation and services for deciding on immigration and naturalization cases
- **United States Department of Justice 202-514-2000.** Immigrant benefits assistance
- **Kansas Dept for Children and Families** Help with child care costs, help with or enforcement of child support, Food Stamps/SNAP Applications, Medicaid Appeals/Complaints, Medicaid Applications, and TANF Applications.
 - **Bourbon & Linn 620-223-4010**
 - **Brown & Doniphan. 785-742-7186**
 - **Franklin County 785-229-8600**
 - **Johnson County 913-826-7300**
 - **Miami County 913-755-2162**
 - **Wyandotte County 913-279-7000**
- **Kansas Legal Services, Inc 1-800-723-6953.** Legal counsel and legal representation for non-criminal matters

EDUCATION

- **Johnson County Community College-Adult Education 913-469-7621** *Adult Basic Education, English as a Second Language, GED/High School Equivalency Test Instruction*
- **Kansas City MO Public Library-Northeast Branch 816-701-3485. 6000 Wilson Rd. KC MO. 64123** *Computer Literacy Training Programs, English as a Second Language*
- **KCK Community College – Adult Education Program 913-288-7660** *Adult Basic Education, English as a Second Language, GED/High School Equivalency Test Instruction*
- **Literacy KC 816-333-9332.** *Adult Basic Education, Adult Literacy Programs, Computer Literacy Training Programs, English as a Second Language, Family Literacy Programs, GED/High School Equivalency Test Instruction*
- **Mosaikon- Immigrant Connection 913-210-1776.** *Citizenship Test Preparation, Comprehensive Immigration/Naturalization Services, English as a Second Language, Naturalization Support/Legal Services*
- **Educational Opportunity Center – Kansas City 816-604-4400** *helps people who want to go back to school so they can get a certificate or degree.*
- **Healing House Recovery Center 816-768-8005** *Alcohol Use Disorder Support Groups, Career Counseling, Drug Use Disorder Support Groups, GED/High School Equivalency Test Instruction, General Addictions and Substance Use Disorder Support Groups, Help finding a job, training for job interviews, job readiness, teaching life skills, peer counseling, and help writing a resume.*

EMPLOYMENT

- **Connections to Success 816-561-5115. 300 W. Linwood Blvd KC MO 64111**
- **Second Chance Program 816-231-0450. 3100 Broadway Blvd. KC MO 64111** *requires being on the job at least 3 months*

- **Metropolitan Community College Educational Opportunity Center** 816-604-4400 3100 Main St. KC MO 64111 *GED assistance and job training programs*
- **Journey to New Life** 816-960-4808 3120 Troost Ave. KC MO 64109 *must be released from Missouri State Department of Corrections within last calendar year (with proof of incarceration)*
- **Ad Hoc** 816-531-2665 2701 E 31st St. KC MO 64128 *employment readiness, training, life skills, employment connections*
- **Jewish Vocational Service-Employment Services** 816-471-2808 1608 Baltimore Ave. KC MO 64108 *program to help people who have trouble getting or keeping a job find and keep a job*
- **Building Brighter Futures** 816-842-4975. 4042 Indiana Ave. KC MO 64130 *help for ex-offenders, and people with difficulty finding jobs. Also helps veterans, homeless people, people with HIV/AIDs, history of substance abuse or mental health challenges find jobs and create resumes. Poor education and credit problems are ok*
- **Job Corps** 816-921-3366. 6301 Rockhill Rd. KC MO. 64131 *for people age 16-24 to complete high school education, train for a career, and get a job*

For more resources:

Greater Kansas City Coalition to End Homelessness

<https://gkcceh.org/help-for-homeless-kansas-city/>

Community Care Link

<https://www.communitycarelink.com/kansas-city-area-resource-guide>